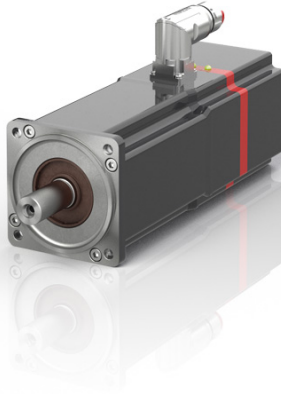


# AMP8042 | Distributed servo drive 3.84...4.10 Nm Nm (M<sub>0</sub>), F4 (87 mm)



**i** **Product status:** Regular delivery

The AMP8042 permanent magnet-excited three-phase synchronous motor with integrated servo drive can be equipped with either multi-turn or single-turn encoders. With One Cable Automation, the EtherCAT P single cable solution, it features a simple, convenient and fail-safe connection to the AMP8600 distributed power supply module or the AMP8800 decentralized distribution module.

The three-phase synchronous motor with flange code F4 (87 mm) and motor length 2 has a shaft diameter  $b = 19\text{ k6}$  and a free shaft end of  $d = 40\text{ mm}$ .

## Drive-integrated safety functions

The AMP8000 distributed servo drive includes TwinSAFE as standard for the realization of the drive-integrated safety functions STO/SS1 according to IEC 61800-5-2. It is optionally available with the following TwinSAFE Safe Motion safety functions:

- Safe stop functions (STO, SOS, SS1, SS2)
- Safe speed functions (SLS, SSM, SSR, SMS)
- Safe position functions (SLP, SCA, SLI)
- Safe acceleration functions (SAR, SMA)
- Safe direction functions (SDIp, SDIn)
- Safe braking functions (SBC, SBT)

The TwinCAT 3 Drive Manager 2 serves as commissioning tool. Thanks to the structured design and the wide range of functions, commissioning of the axis is simple and intuitive.